

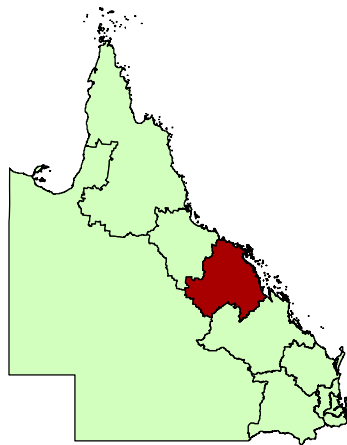
# Recreational fishing in the regions Mackay residents

A snapshot from the 2010 statewide recreational fishing survey

## The local region

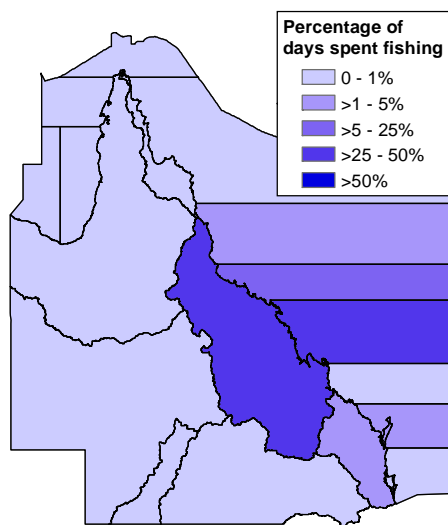
This factsheet describes the recreational fishing activities of residents of the Mackay region (see red section of map below). This information was collected during the 2010 statewide recreational fishing survey.

The Mackay region includes Bowen, Mackay, Proserpine and the Whitsunday islands. Fishers in the region have access to excellent marine fishing environments which is reflected in their catches. The Great Barrier Reef is close by as are many mangrove lined estuaries and bays.



## Where do residents fish?

Residents of the Mackay region did most of their fishing where they lived but some did venture south to the Fraser coastal waters and the south-eastern catchment (Figure 1).

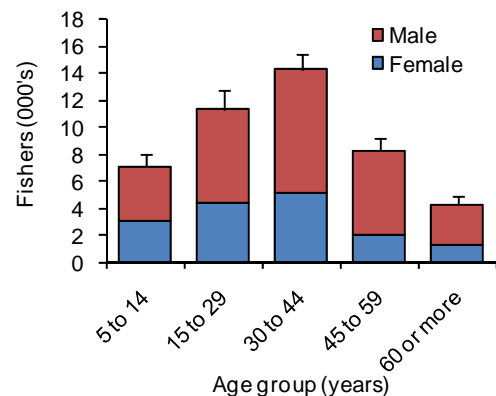


**Figure 1: Map showing percentage of days spent fishing by Mackay region residents in the different fishing regions during the survey**

## Participation

Recreational fishing is very popular with approximately 28% of residents 5 years or above fishing in the 12 months prior to the survey. This is the highest participation rate for any region in Queensland and much higher than the statewide average of 17%.

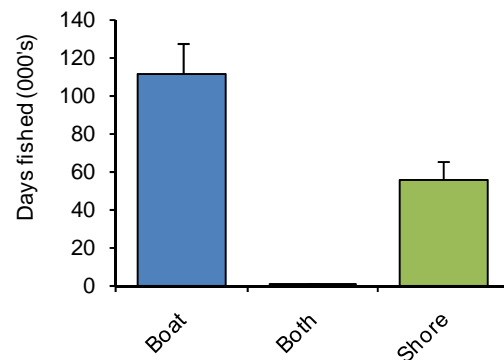
Fishers were distributed across all age groups with the 30–44 year olds making up the bulk of recreational fishers (Figure 2). As with the rest of Queensland more males than females went recreational fishing.



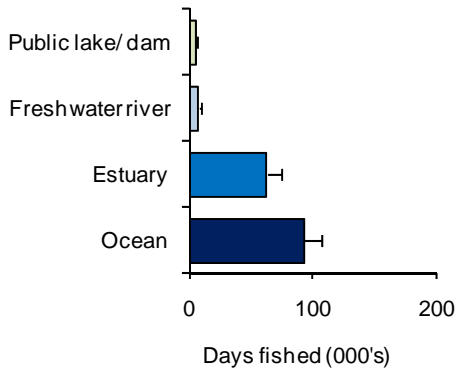
**Figure 2: Fishers by age group and gender**

## Days fished

More days were spent fishing from boats than the shore (Figure 3) and most of this was done in marine waters (Figure 4).

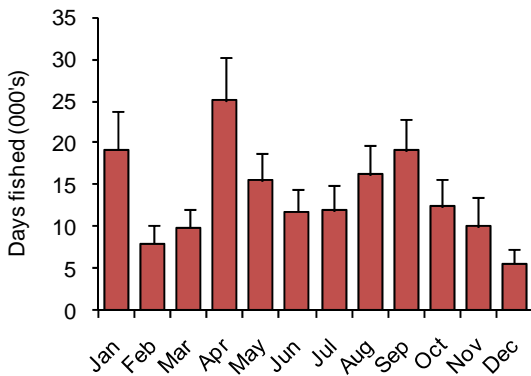


**Figure 3: Days fished from a boat or the shore**



**Figure 4: Days fished by water body**

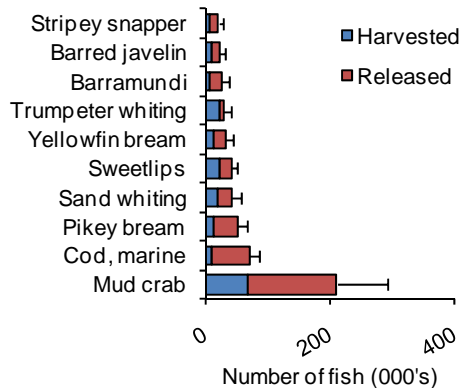
People went fishing throughout the year but there were peaks in April and September (Figure 5) coinciding with school holidays.



**Figure 5: Days fished by month**

### Top 10 species

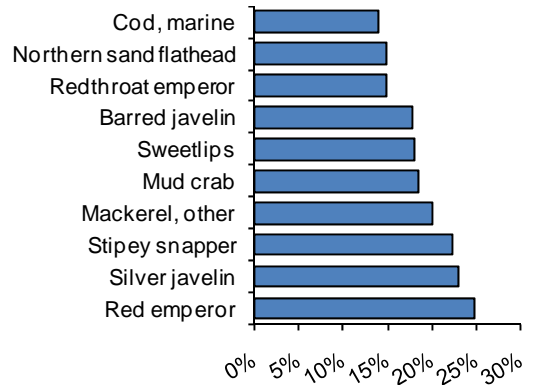
Residents of the Mackay region caught over 200,000 mud crabs. Marine cod and pikey bream were also commonly caught species. Approximately 70,000 marine cod were caught with 85% of them released (Figure 6). Approximately 25,000 barramundi were caught and 75% were released.



**Figure 6: Top 10 species caught (both harvested and released) by number**

### Proportion of Queensland's harvest

Although redthroat emperor was not one of the top 10 species caught by residents of the Mackay region, they did take approximately 25% of Queensland's recreational harvest of redthroat emperor. They also took more than 20% of Queensland's harvest of silver javelin and stripey snapper (Figure 7).



**Figure 7: Recreational harvest by residents of the Mackay region as a percentage of the harvest by all Queenslanders**

### The statewide recreational fishing surveys

Fisheries Queensland's 2010 statewide recreational fishing surveys collected the information for these regional profiles. This information would not be available without the honest and thoughtful participation in these surveys by Queensland's recreational fishers. These surveys provide vital information for the sustainable management of Queensland's fisheries and also provide useful information for regional councils, businesses and stakeholder groups.

To find out more about the information available from these surveys please visit Monitoring our Fisheries at [www.fisheries.qld.gov.au](http://www.fisheries.qld.gov.au)

Follow Fisheries Queensland on [facebook](#) and [twitter](#).